



NATA LIGHTING CO.,LTD.
www.nata.cn
Email:info@nata.com
Tel:+86-750-3770000 Fax:+86 750 3771111
Address:Address:380JinOu Road,GaoXin Zone,Jiang Men City,Guangdong,China

Nata

Client:

LumCAT: 2-2569-L

Luminaire: 92.70.411.00

Report No: 2024912-B008

Ballast type: AC

Test No: 2024912-C008

Voltage(V): 36.720

LampCAT: NICHIA NFCWJ130B-V3

Current(A): 0.580

Lamp flux(lm): 2826.0

Power (W): 21.290

Number of Lamps: 1

PF: 0.000

Length(mm): 0

Width(mm): 0

Phm Type: C

Height(mm): 0

Photometric Results

Lumens(lm): 2542.44, Efficiency(%): 89.97% , Luminous Efficacy(lm/W): 119.42

Central intensity(cd): 4111.741, Maximum intensity(cd): 4111.741

Angle of maximum intensity: C=0.0 γ =0.0

Beam Angle(50%Imax): [C0/180]Total=47.8

[C90/270]Total=47.8

Field angle(10%Imax): [C0/180]Total=72.0

[C90/270]Total=72.0

Maximum s/h(1/2): C0_180=0.74 C90_270=0.74

Maximum s/h(1/4): C0_180=0.76 C90_270=0.76

Up flux rate of lamp(%): 0.00%

Down flux rate of lamp(%): 89.97%

Up flux rate of LUM(%): - -

Down flux rate of LUM(%): 100.00%

CIE Type : Direct lighting

Output flux ratio in π solid angle : 99.058%

Equipment: GMS 1800
Temperature(°C): 25.0

Date: 2024/9/12
Humidity(%): 60.0%

Operator: NT
Distance(m): 7.25

$\gamma(^{\circ})$	Average I(cd)	Zonal F(lm)	Sum F(lm)	Eff Flux(%)	Eff Sum(%)
0.0	4111.741	0.000	0	0.00%	0.00%
1.0	4105.953	3.932	3.932	0.14%	0.15%
2.0	4093.765	11.769	15.701	0.42%	0.62%
3.0	4072.661	19.531	35.232	0.69%	1.39%
4.0	4041.537	27.161	62.393	0.96%	2.45%
5.0	3998.771	34.589	96.982	1.22%	3.81%
6.0	3947.023	41.757	138.739	1.48%	5.46%
7.0	3876.195	48.559	187.298	1.72%	7.37%
8.0	3801.603	54.949	242.247	1.94%	9.53%
9.0	3714.336	60.913	303.159	2.16%	11.92%
10.0	3616.629	66.343	369.502	2.35%	14.53%
11.0	3517.108	71.281	440.782	2.52%	17.34%
12.0	3410.623	75.730	516.512	2.68%	20.32%
13.0	3299.664	79.634	596.147	2.82%	23.45%
14.0	3193.461	83.111	679.258	2.94%	26.72%
15.0	3080.366	86.130	765.388	3.05%	30.10%
16.0	2977.061	88.758	854.146	3.14%	33.60%
17.0	2867.665	91.018	945.164	3.22%	37.18%
18.0	2763.684	92.849	1038.013	3.29%	40.83%
19.0	2639.025	93.996	1132.009	3.33%	44.52%
20.0	2525.352	94.522	1226.532	3.34%	48.24%
21.0	2414.616	94.857	1321.389	3.36%	51.97%
22.0	2287.651	94.494	1415.883	3.34%	55.69%
23.0	2171.830	93.572	1509.455	3.31%	59.37%
24.0	2044.096	92.175	1601.63	3.26%	63.00%
25.0	1928.282	90.323	1691.953	3.20%	66.55%
26.0	1802.086	88.056	1780.009	3.12%	70.01%
27.0	1670.798	84.965	1864.974	3.01%	73.35%
28.0	1523.228	80.866	1945.84	2.86%	76.53%
29.0	1304.076	73.970	2019.81	2.62%	79.44%
30.0	1187.426	67.270	2087.08	2.38%	82.09%
31.0	1065.389	62.693	2149.773	2.22%	84.56%
32.0	926.545	57.067	2206.839	2.02%	86.80%
33.0	774.147	50.103	2256.942	1.77%	88.77%
34.0	643.299	42.896	2299.839	1.52%	90.46%
35.0	522.957	36.220	2336.058	1.28%	91.88%
36.0	412.681	29.791	2365.849	1.05%	93.05%
37.0	308.246	23.513	2389.362	0.83%	93.98%

$\gamma(^{\circ})$	Average I(cd)	Zonal F(lm)	Sum F(lm)	Eff Flux(%)	Eff Sum(%)
38.0	253.029	18.735	2408.096	0.66%	94.72%
39.0	196.255	15.335	2423.432	0.54%	95.32%
40.0	160.730	12.450	2435.882	0.44%	95.81%
41.0	117.142	9.895	2445.777	0.35%	96.20%
42.0	101.222	7.934	2453.71	0.28%	96.51%
43.0	88.969	7.045	2460.756	0.25%	96.79%
44.0	78.706	6.328	2467.084	0.22%	97.04%
45.0	69.632	5.701	2472.785	0.20%	97.26%
46.0	61.965	5.146	2477.931	0.18%	97.46%
47.0	55.618	4.677	2482.608	0.17%	97.65%
48.0	49.435	4.247	2486.855	0.15%	97.81%
49.0	44.330	3.851	2490.705	0.14%	97.97%
50.0	40.177	3.523	2494.229	0.12%	98.10%
51.0	36.321	3.237	2497.465	0.11%	98.23%
52.0	33.357	2.990	2500.455	0.11%	98.35%
53.0	30.723	2.787	2503.243	0.10%	98.46%
54.0	28.226	2.598	2505.841	0.09%	98.56%
55.0	26.222	2.430	2508.271	0.09%	98.66%
56.0	24.428	2.289	2510.56	0.08%	98.75%
57.0	22.779	2.158	2512.719	0.08%	98.83%
58.0	21.156	2.032	2514.75	0.07%	98.91%
59.0	19.941	1.921	2516.672	0.07%	98.99%
60.0	18.673	1.824	2518.496	0.06%	99.06%
61.0	17.648	1.733	2520.229	0.06%	99.13%
62.0	16.557	1.648	2521.877	0.06%	99.19%
63.0	15.545	1.561	2523.439	0.06%	99.25%
64.0	14.704	1.484	2524.923	0.05%	99.31%
65.0	13.831	1.412	2526.335	0.05%	99.37%
66.0	12.990	1.338	2527.673	0.05%	99.42%
67.0	12.260	1.270	2528.943	0.04%	99.47%
68.0	11.537	1.206	2530.148	0.04%	99.52%
69.0	10.775	1.138	2531.287	0.04%	99.56%
70.0	10.033	1.069	2532.355	0.04%	99.60%
71.0	9.382	1.003	2533.359	0.04%	99.64%
72.0	8.771	0.944	2534.303	0.03%	99.68%
73.0	8.167	0.886	2535.189	0.03%	99.71%
74.0	7.569	0.827	2536.016	0.03%	99.75%
75.0	6.984	0.769	2536.785	0.03%	99.78%

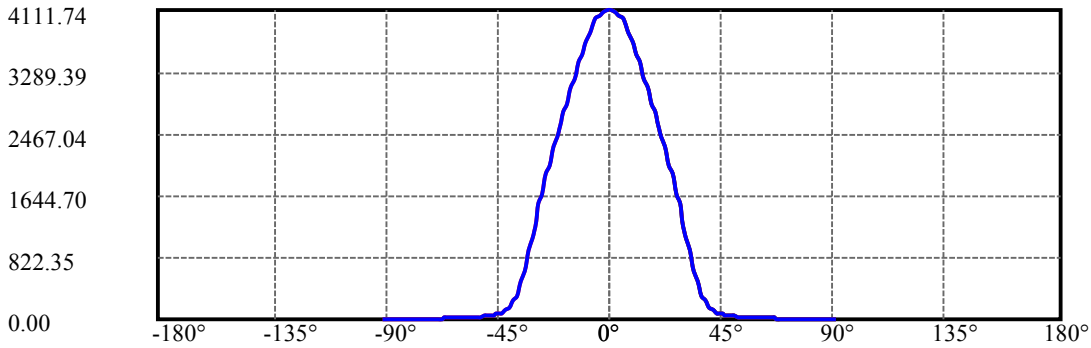
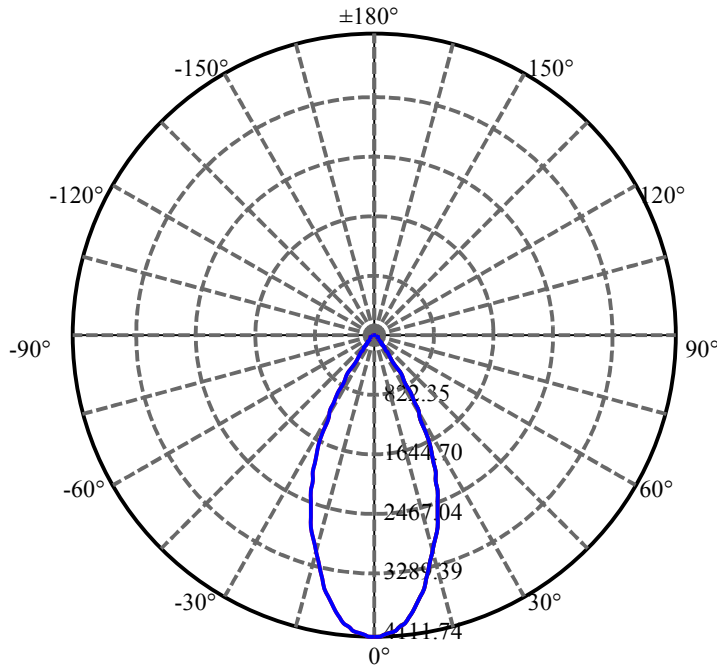
$\gamma(^{\circ})$	Average I(cd)	Zonal F(lm)	Sum F(lm)	Eff Flux(%)	Eff Sum(%)
76.0	6.452	0.713	2537.498	0.03%	99.81%
77.0	5.907	0.659	2538.157	0.02%	99.83%
78.0	5.407	0.606	2538.763	0.02%	99.86%
79.0	4.816	0.549	2539.312	0.02%	99.88%
80.0	4.356	0.494	2539.806	0.02%	99.90%
81.0	3.870	0.445	2540.251	0.02%	99.91%
82.0	3.430	0.396	2540.647	0.01%	99.93%
83.0	3.035	0.351	2540.999	0.01%	99.94%
84.0	2.654	0.310	2541.309	0.01%	99.96%
85.0	2.293	0.270	2541.579	0.01%	99.97%
86.0	2.017	0.236	2541.814	0.01%	99.98%
87.0	1.702	0.204	2542.018	0.01%	99.98%
88.0	1.419	0.171	2542.189	0.01%	99.99%
89.0	1.110	0.139	2542.327	0.00%	100.00%
90.0	0.959	0.113	2542.441	0.00%	100.00%

ZONAL LUMEN SUMMARY

Zone	Lumens	%Lamp	%Fixt
0-30	2087.08	73.85%	82.09%
0-40	2435.88	86.20%	95.81%
0-60	2518.50	89.12%	99.06%
0-90	2542.33	89.96%	100.00%
0-120	2542.33	89.96%	100.00%
0-180	2542.44	89.97%	100.00%
60-90	23.83	0.84%	0.94%
90-120	0.00	0.00%	0.00%
90-130	0.00	0.00%	0.00%
90-150	0.00	0.00%	0.00%
90-180	0.00	0.00%	0.00%
0-29.21	2033.95	71.97%	80.00%

ZONAL LUMEN SUMMARY

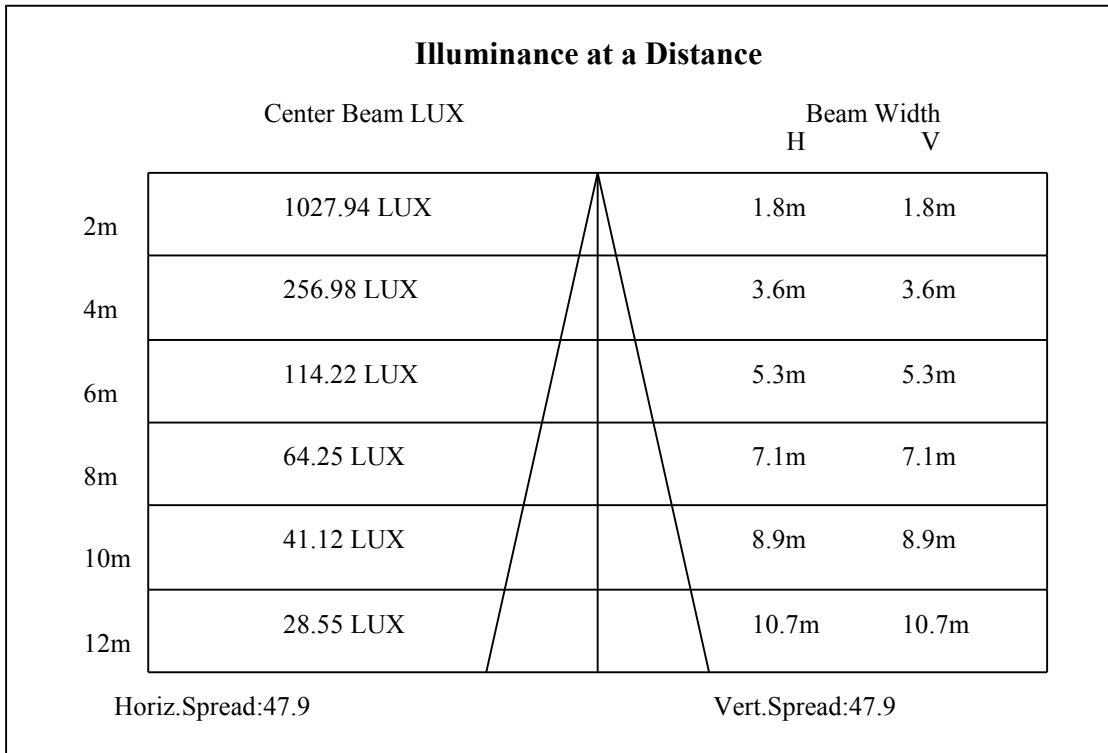
0-10	369.50
10-20	857.03
20-30	860.55
30-40	348.80
40-50	58.35
50-60	24.27
60-70	13.86
70-80	7.45
80-90	2.52
90-100	0.00
100-110	0.00
110-120	0.00
120-130	0.00
130-140	0.00
140-150	0.00
150-160	0.00
160-170	0.00
170-180	0.00

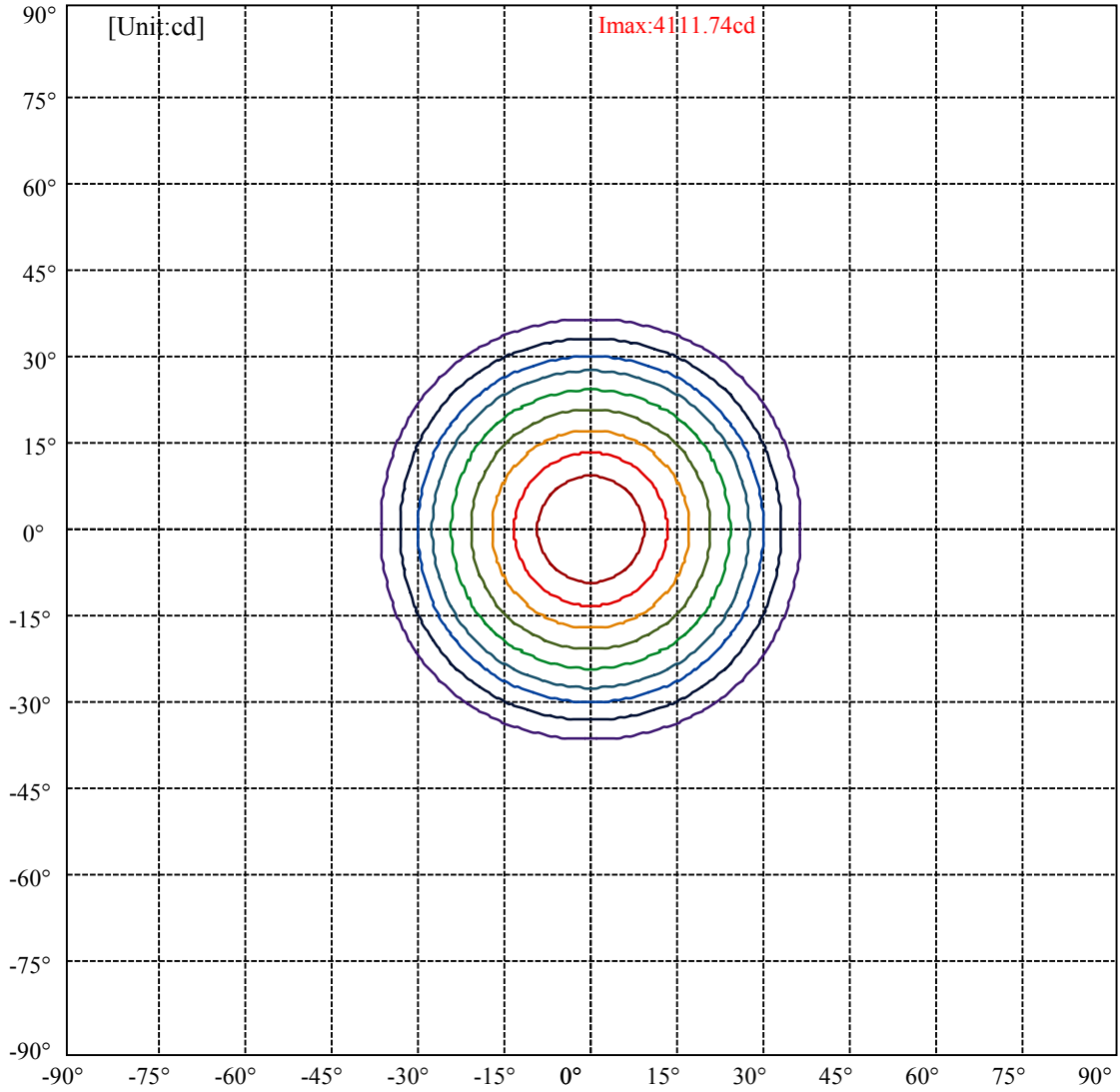


C0(Max): ———
C0/C180: ———
C90/C270: ———

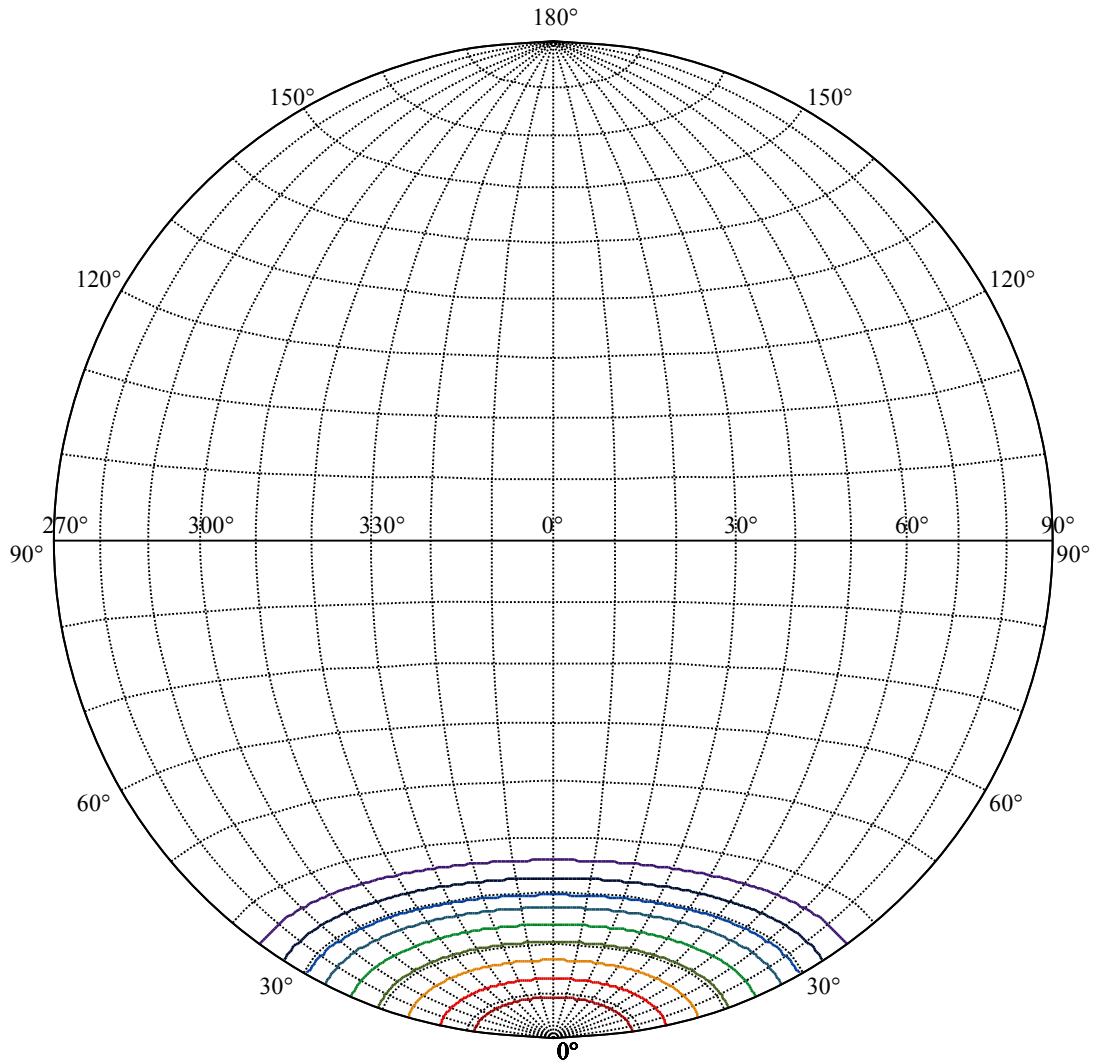
Field angle(10%Imax):C0/180Left:36.0 Right:36.0
:C90/270Left:36.0 Right:36.0

Beam Angle(50%Imax):C0/180Left:23.9 Right:23.9
:C90/270Left:23.9 Right:23.9





(10%Imax) 411.174	—
(20%Imax) 822.348	—
(30%Imax) 1233.52	—
(40%Imax) 1644.7	—
(50%Imax) 2055.87	—
(60%Imax) 2467.04	—
(70%Imax) 2878.22	—
(80%Imax) 3289.39	—
(90%Imax) 3700.57	—



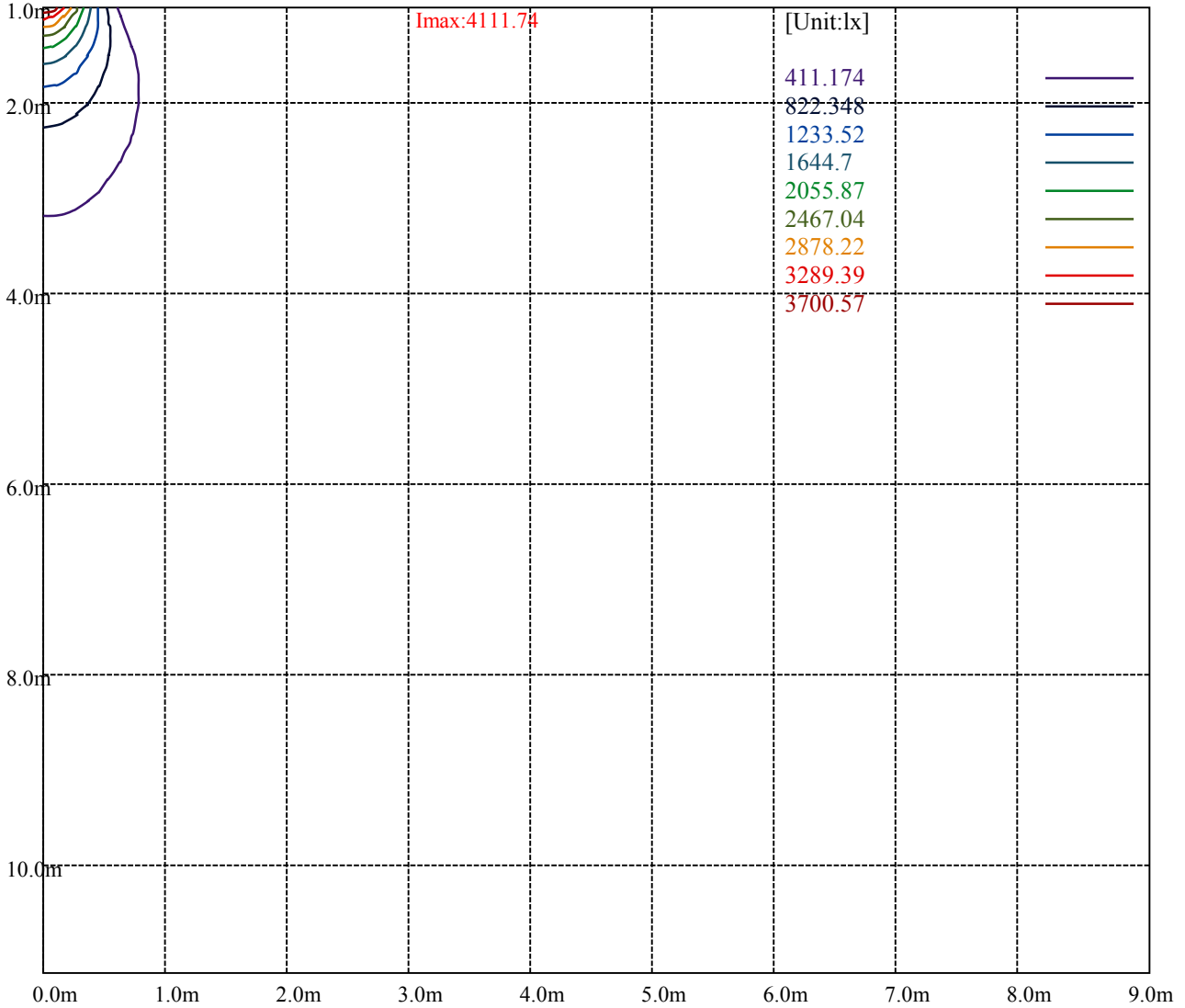
House

[Unit:cd]

Road

Imax:4111.74

(10%Imax)	411.174	—
(20%Imax)	822.348	—
(30%Imax)	1233.52	—
(40%Imax)	1644.7	—
(50%Imax)	2055.87	—
(60%Imax)	2467.04	—
(70%Imax)	2878.22	—
(80%Imax)	3289.39	—
(90%Imax)	3700.57	—



Luminance Table

γ	45	50	55	60	65	70	75	80	85
C0	0	0	0	0	0	0	0	0	0
C45	0	0	0	0	0	0	0	0	0
C90	0	0	0	0	0	0	0	0	0

L(Hor)(65)	L(Ver)(65)	L45(65)	L(Hor)(75)	L(Ver)(75)	L45(75)	L(Hor)(85)	L(Ver)(85)	L45(85)
0	0	0	0	0	0	0	0	0

Glare Table

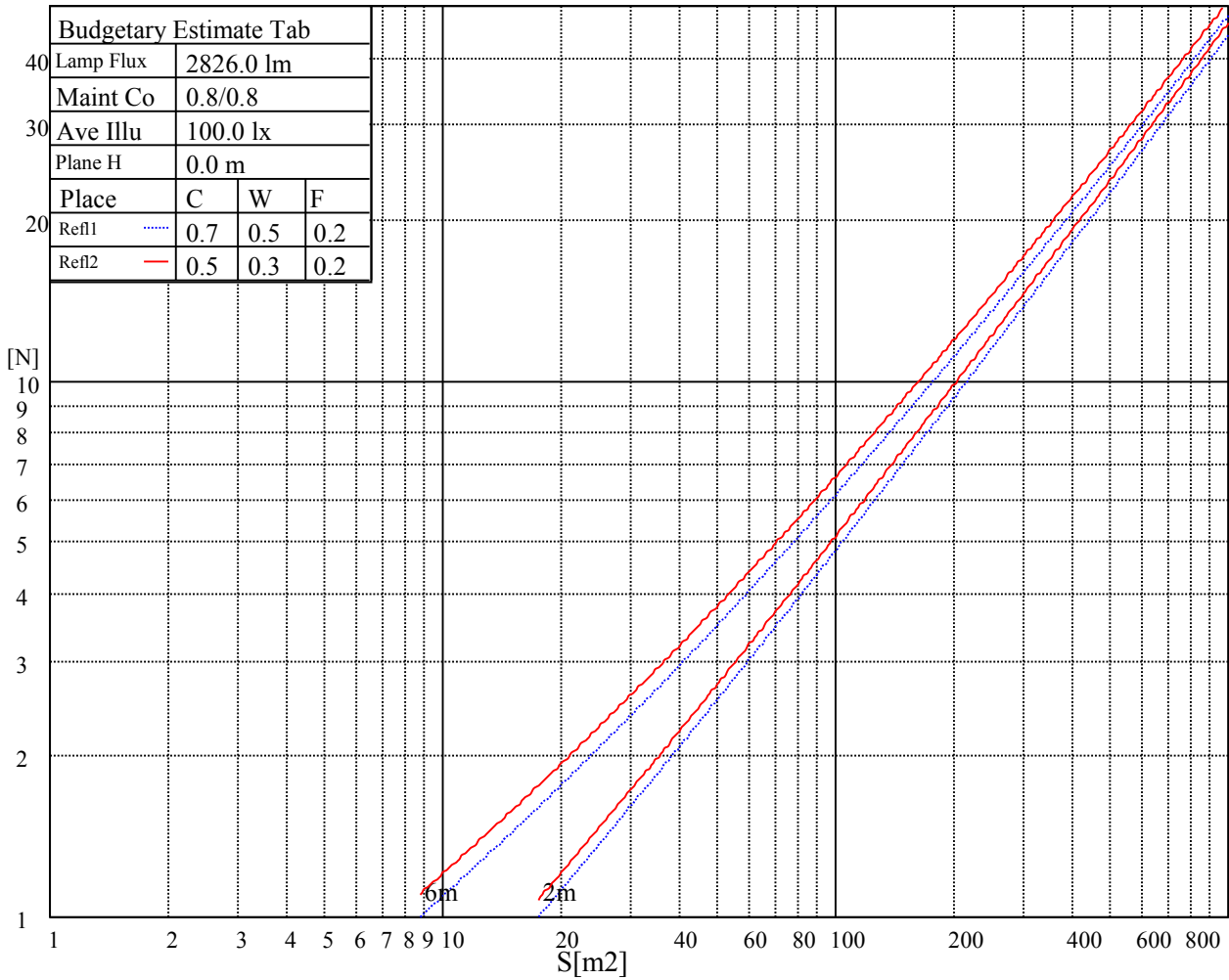
Glare	Quality	Service Values Illuminance(lx)							
1.15	A	2000	1000	500	<=300				
1.5	B		2000	1000	500	<=300			
1.85	C			2000	1000	500	<=300		
2.2	D				2000	1000	500	<=300	
2.55	E					2000	1000	500	<=300
		a	b	c	d	e	f	g	h

Luminance Limiting Curve

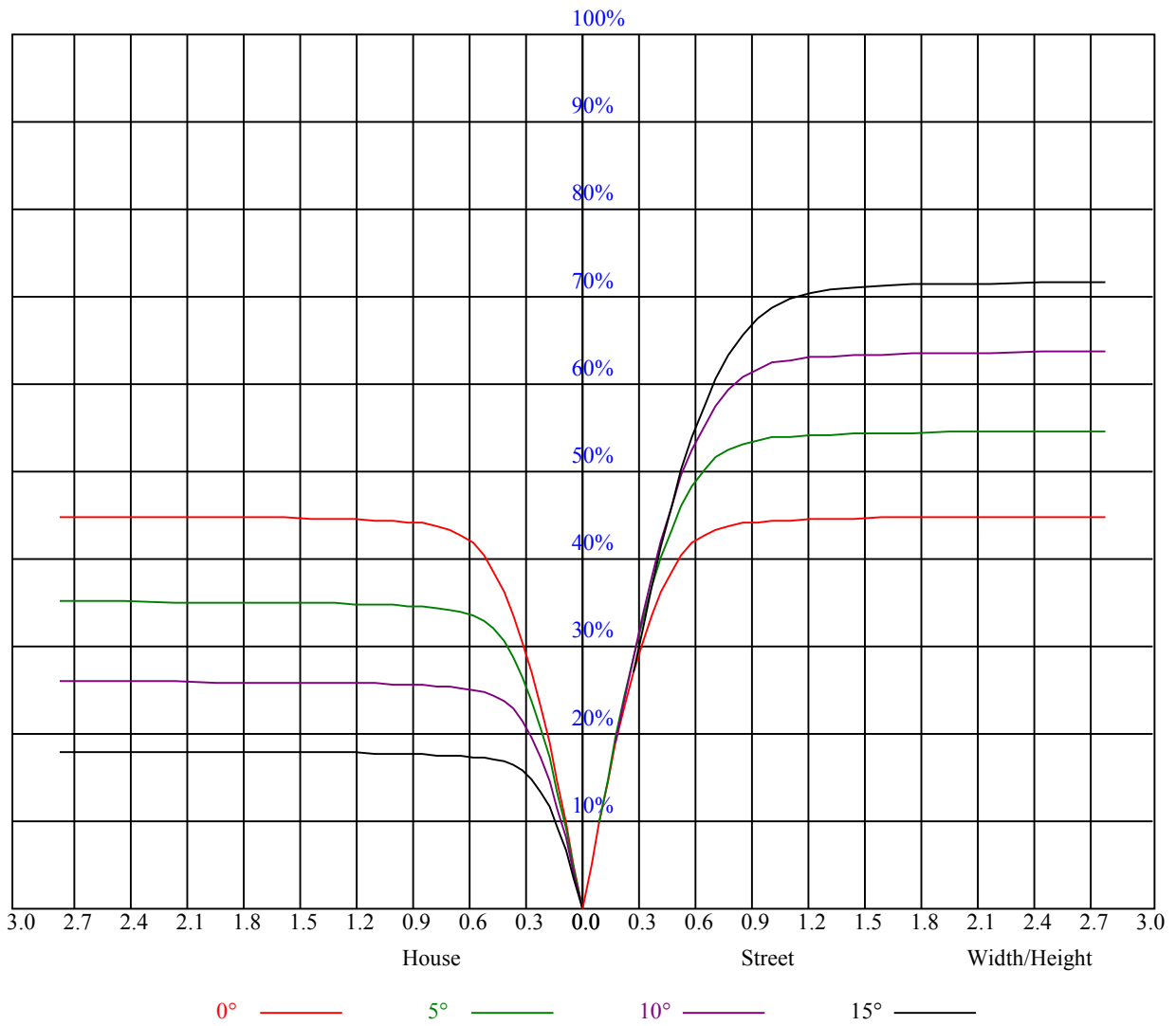


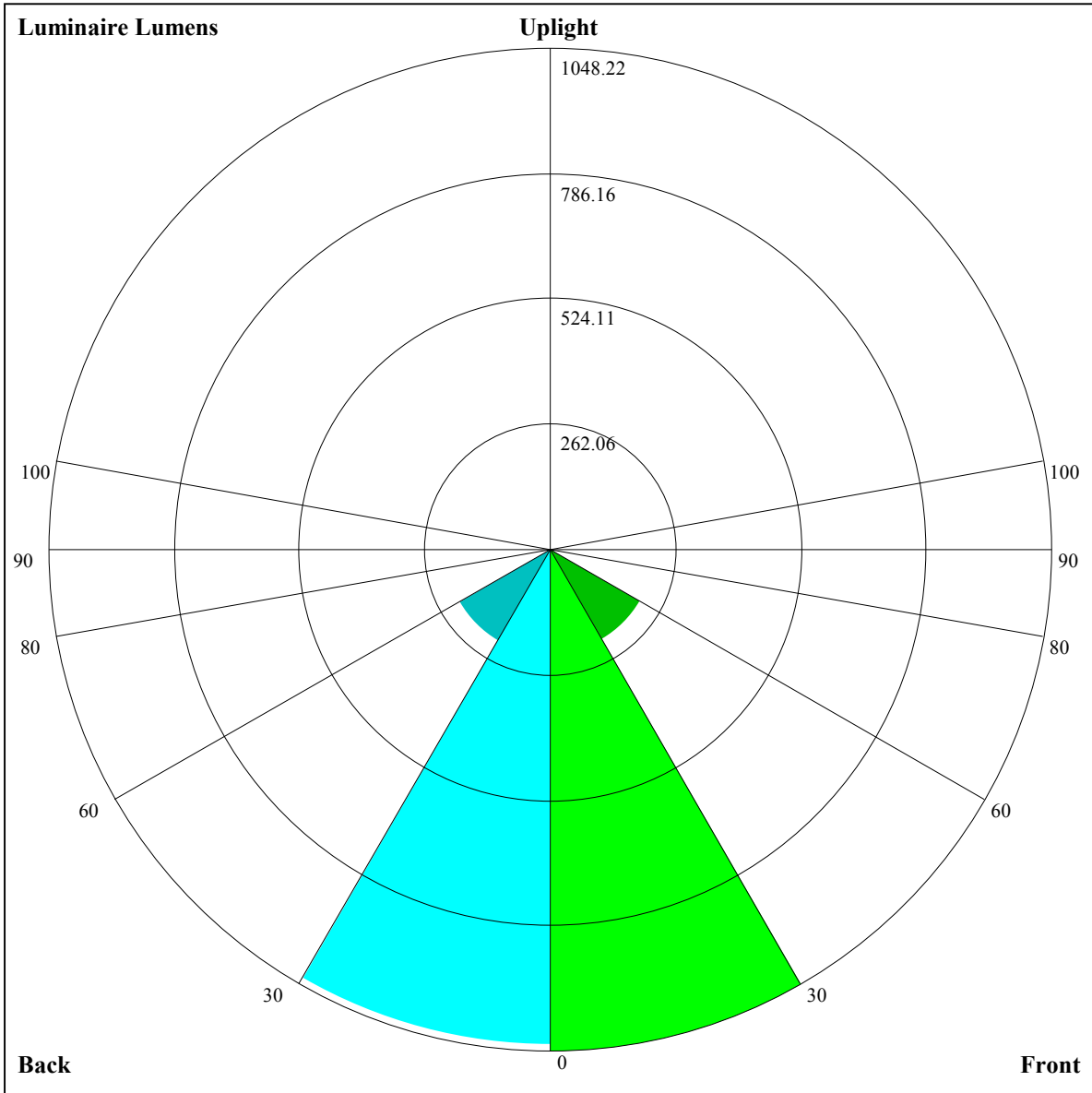
Illumination assessment according UGR											
Rf of Ceiling	70	70	50	50	30	70	70	50	50	30	
Rf of Wall	50	30	50	30	30	50	30	50	30	30	
Rf of Floor	20	20	20	20	20	20	20	20	20	20	
Room dimensions		Viewed crosswise					Viewed endwise				
X	Y										
2H	2H	非数字	非数字	非数字	非数字	非数字	非数字	非数字	非数字	非数字	
	3H	非数字	非数字	非数字	非数字	非数字	非数字	非数字	非数字	非数字	
	4H	非数字	非数字	非数字	非数字	非数字	非数字	非数字	非数字	非数字	
	6H	非数字	非数字	非数字	非数字	非数字	非数字	非数字	非数字	非数字	
	8H	非数字	非数字	非数字	非数字	非数字	非数字	非数字	非数字	非数字	
	12H	非数字	非数字	非数字	非数字	非数字	非数字	非数字	非数字	非数字	
4H	2H	非数字	非数字	非数字	非数字	非数字	非数字	非数字	非数字	非数字	
	3H	非数字	非数字	非数字	非数字	非数字	非数字	非数字	非数字	非数字	
	4H	非数字	非数字	非数字	非数字	非数字	非数字	非数字	非数字	非数字	
	6H	非数字	非数字	非数字	非数字	非数字	非数字	非数字	非数字	非数字	
	8H	非数字	非数字	非数字	非数字	非数字	非数字	非数字	非数字	非数字	
8H	12H	非数字	非数字	非数字	非数字	非数字	非数字	非数字	非数字	非数字	
	4H	非数字	非数字	非数字	非数字	非数字	非数字	非数字	非数字	非数字	
	6H	非数字	非数字	非数字	非数字	非数字	非数字	非数字	非数字	非数字	
	8H	非数字	非数字	非数字	非数字	非数字	非数字	非数字	非数字	非数字	
12H	12H	非数字	非数字	非数字	非数字	非数字	非数字	非数字	非数字	非数字	
	4H	非数字	非数字	非数字	非数字	非数字	非数字	非数字	非数字	非数字	
	6H	非数字	非数字	非数字	非数字	非数字	非数字	非数字	非数字	非数字	
	8H	非数字	非数字	非数字	非数字	非数字	非数字	非数字	非数字	非数字	
Variation with the observer position at spacings:											
S = 1.0H		非数字/非数字					非数字/非数字				
S = 1.5H		非数字/非数字					非数字/非数字				
S = 2.0H		非数字/非数字					非数字/非数字				
Standard tables:		BK0					BK0				
Uncorrected UGR		负无穷大					负无穷大				

UGR calculation is based on CIE Publ. 117 ,S/H = 0.25



RHOCC	80			70			50			30			10			0
RHOW	50	30	10	50	30	10	50	30	10	50	30	10	50	30	10	0
RCR	COEFFICIENTS OF UTILIZATION RHOFC=20 CU															
0	1.07	1.07	1.07	1.05	1.05	1.05	1.00	1.00	1.00	0.96	0.96	0.96	0.92	0.92	0.92	0.90
1	1.00	0.98	0.96	0.98	0.96	0.95	0.95	0.93	0.92	0.91	0.90	0.89	0.88	0.87	0.86	0.85
2	0.94	0.90	0.88	0.92	0.89	0.87	0.89	0.87	0.85	0.87	0.85	0.83	0.84	0.83	0.81	0.80
3	0.88	0.84	0.81	0.87	0.83	0.80	0.85	0.81	0.79	0.82	0.80	0.77	0.80	0.78	0.76	0.75
4	0.83	0.78	0.75	0.82	0.78	0.74	0.80	0.76	0.74	0.78	0.75	0.73	0.77	0.74	0.72	0.71
5	0.78	0.74	0.70	0.78	0.73	0.70	0.76	0.72	0.69	0.74	0.71	0.68	0.73	0.70	0.68	0.67
6	0.74	0.69	0.66	0.73	0.69	0.65	0.72	0.68	0.65	0.71	0.67	0.65	0.70	0.67	0.64	0.63
7	0.70	0.65	0.62	0.70	0.65	0.62	0.69	0.64	0.61	0.68	0.64	0.61	0.67	0.63	0.61	0.60
8	0.67	0.62	0.58	0.66	0.62	0.58	0.65	0.61	0.58	0.64	0.61	0.58	0.64	0.60	0.58	0.57
9	0.64	0.59	0.55	0.63	0.59	0.55	0.62	0.58	0.55	0.62	0.58	0.55	0.61	0.57	0.55	0.54
10	0.61	0.56	0.53	0.60	0.56	0.53	0.60	0.55	0.52	0.59	0.55	0.52	0.58	0.55	0.52	0.51





Luminaire Lumens:

FL=1048.22,FM=216.49,FH=10.62,FVH=1.31

BL=1035.49,BM=221.16,BH=10.67,BVH=1.35

UL=0,UH=0

BUG Rating:B3-U0-G0

Intensity data(cd)

C/γ(°)	0.0	1.0	2.0	3.0	4.0	5.0	6.0	7.0	8.0
0.0	4103.82	4101.03	4093.20	4079.27	4047.52	3999.06	3949.44	3880.95	3800.69
45.0	4109.91	4117.75	4122.74	4120.53	4112.17	4086.52	4053.09	3990.70	3924.95
90.0	4117.75	4118.27	4097.67	4079.85	4033.59	3977.88	3911.60	3835.22	3731.04
135.0	4115.49	4116.59	4103.82	4077.59	4040.85	3992.91	3962.27	3863.66	3816.88
180.0	4103.82	4103.82	4097.67	4072.02	4051.41	4015.20	3960.06	3899.87	3835.80
225.0	4109.91	4077.59	4062.56	4030.23	3985.13	3931.10	3864.76	3790.65	3709.86
270.0	4117.75	4109.91	4089.31	4067.02	4038.06	4005.74	3954.49	3891.52	3814.09
315.0	4115.49	4102.66	4083.16	4054.78	4023.55	3981.77	3920.48	3856.98	3779.51
360.0	4103.82	4101.03	4093.20	4079.27	4047.52	3999.06	3949.44	3880.95	3800.69
C/γ(°)	9.0	10.0	11.0	12.0	13.0	14.0	15.0	16.0	17.0
0.0	3717.69	3623.50	3526.58	3415.72	3314.28	3207.89	3093.67	2977.19	2857.40
45.0	3841.95	3752.80	3662.50	3554.43	3444.11	3339.93	3236.85	3120.95	3011.20
90.0	3629.07	3519.32	3409.57	3304.29	3196.75	3090.31	2976.67	2861.87	2747.13
135.0	3725.47	3624.66	3513.22	3396.75	3283.11	3162.21	3058.56	2952.70	2845.73
180.0	3762.79	3660.29	3562.21	3466.97	3354.96	3236.85	3120.43	3006.73	2904.24
225.0	3611.25	3504.87	3396.22	3284.21	3171.10	3063.03	2958.85	2857.40	2751.02
270.0	3736.09	3640.22	3550.54	3451.94	3341.03	3219.56	3119.85	3023.45	2920.37
315.0	3690.36	3607.36	3516.01	3410.68	3291.99	3227.92	3078.06	3016.19	2904.24
360.0	3717.69	3623.50	3526.58	3415.72	3314.28	3207.89	3093.67	2977.19	2857.40
C/γ(°)	18.0	19.0	20.0	21.0	22.0	23.0	24.0	25.0	26.0
0.0	2786.13	2616.19	2483.58	2403.32	2208.89	2125.31	1992.17	1860.08	1725.26
45.0	2892.51	2775.51	2701.40	2527.05	2393.85	2312.54	2172.09	2032.28	1897.98
90.0	2635.12	2517.01	2391.65	2319.22	2183.81	1999.95	1921.37	1789.91	1655.61
135.0	2739.29	2624.55	2506.39	2384.39	2261.82	2131.99	2011.09	1890.20	1765.36
180.0	2792.80	2678.01	2569.94	2455.14	2342.61	2246.78	2102.45	2004.94	1892.99
225.0	2659.08	2515.90	2392.75	2299.14	2176.56	2060.66	1947.02	1835.01	1706.34
270.0	2814.51	2706.44	2587.76	2474.64	2406.10	2297.45	2129.20	2058.45	1944.81
315.0	2790.02	2678.59	2569.36	2454.04	2327.57	2199.95	2077.38	1955.38	1828.33
360.0	2786.13	2616.19	2483.58	2403.32	2208.89	2125.31	1992.17	1860.08	1725.26
C/γ(°)	27.0	28.0	29.0	30.0	31.0	32.0	33.0	34.0	35.0
0.0	1580.40	1424.97	1060.55	1060.55	940.71	796.16	655.61	528.67	458.77
45.0	1759.79	1620.50	1468.44	1313.54	1154.75	996.48	841.05	691.20	558.00
90.0	1507.97	1359.21	1053.93	1053.93	898.92	749.80	612.30	484.36	369.57
135.0	1657.30	1476.22	1324.68	1203.21	1022.71	902.34	758.58	623.76	502.29
180.0	1770.94	1632.22	1488.46	1344.18	1193.17	1042.73	891.78	746.91	610.41
225.0	1567.05	1424.39	1083.52	1052.93	993.33	848.36	709.70	579.19	461.45
270.0	1835.01	1706.34	1563.16	1413.25	1261.71	1109.59	962.52	814.30	673.90
315.0	1687.94	1541.97	1389.86	1057.82	1057.82	966.89	761.63	678.00	549.28
360.0	1580.40	1424.97	1060.55	1060.55	940.71	796.16	655.61	528.67	458.77
C/γ(°)	36.0	37.0	38.0	39.0	40.0	41.0	42.0	43.0	44.0
0.0	320.84	240.89	202.05	155.64	128.73	110.33	95.82	83.99	73.90
45.0	438.21	334.03	297.24	209.09	144.70	119.05	102.60	89.25	78.53
90.0	290.93	198.63	157.37	126.20	108.54	94.77	83.84	74.59	66.86
135.0	391.43	296.14	296.14	161.31	130.41	112.01	96.77	84.99	78.95
180.0	487.83	377.50	282.79	282.79	213.14	132.30	112.54	102.97	89.62
225.0	395.90	264.49	220.50	167.15	135.14	113.48	96.93	84.42	73.80
270.0	542.97	423.18	320.11	283.89	283.89	136.45	119.26	101.97	88.83
315.0	433.33	331.09	248.04	183.97	141.29	118.74	102.02	89.57	79.16
360.0	320.84	240.89	202.05	155.64	128.73	110.33	95.82	83.99	73.90

Intensity data(cd)

C/γ(°)	45.0	46.0	47.0	48.0	49.0	50.0	51.0	52.0	53.0
0.0	65.39	58.13	51.88	46.26	41.42	37.48	34.06	31.12	28.54
45.0	69.80	62.39	55.93	50.04	44.73	40.32	36.64	33.59	31.06
90.0	59.97	54.09	48.52	43.84	39.89	36.58	33.69	31.06	28.80
135.0	69.96	62.55	56.08	50.30	45.20	40.89	37.32	34.27	31.59
180.0	78.48	69.54	61.87	55.30	49.57	44.42	40.21	36.58	33.59
225.0	65.28	57.82	51.35	45.52	40.68	36.64	33.27	30.38	28.12
270.0	78.06	68.80	60.92	54.24	48.30	43.00	38.63	35.01	32.12
315.0	70.12	62.39	58.40	49.99	44.84	42.10	36.74	34.85	31.96
360.0	65.39	58.13	51.88	46.26	41.42	37.48	34.06	31.12	28.54
C/γ(°)	54.0	55.0	56.0	57.0	58.0	59.0	60.0	61.0	62.0
0.0	26.39	24.44	22.76	21.24	19.87	19.13	17.98	16.93	15.93
45.0	28.80	26.65	25.55	23.18	21.60	20.66	18.87	18.19	17.08
90.0	26.60	24.70	22.97	21.97	19.92	18.61	17.82	16.66	15.61
135.0	29.12	26.96	24.97	23.23	21.60	20.08	18.82	17.56	16.40
180.0	30.91	28.54	26.49	24.60	22.92	21.50	20.03	18.76	17.87
225.0	25.97	24.13	22.50	21.34	19.76	18.82	17.82	16.82	15.87
270.0	29.65	27.28	25.28	23.50	21.92	20.55	19.13	18.50	16.98
315.0	28.38	27.07	24.91	23.18	21.66	20.18	18.92	17.77	16.71
360.0	26.39	24.44	22.76	21.24	19.87	19.13	17.98	16.93	15.93
C/γ(°)	63.0	64.0	65.0	66.0	67.0	68.0	69.0	70.0	71.0
0.0	15.03	14.19	13.40	12.62	11.93	11.20	10.41	9.67	8.94
45.0	16.08	15.19	14.24	13.30	12.56	11.77	11.09	10.30	9.62
90.0	14.61	13.61	12.83	12.04	11.25	10.51	9.78	9.15	8.46
135.0	15.40	14.45	13.56	12.88	11.98	11.35	10.62	9.78	9.20
180.0	16.61	15.77	14.82	13.67	13.04	12.19	11.46	10.62	9.88
225.0	14.93	14.09	13.35	12.56	11.93	11.20	10.41	9.72	9.04
270.0	15.98	15.51	14.56	13.77	13.04	12.30	11.56	10.83	10.25
315.0	15.72	14.82	13.88	13.09	12.35	11.77	10.88	10.20	9.67
360.0	15.03	14.19	13.40	12.62	11.93	11.20	10.41	9.67	8.94
C/γ(°)	72.0	73.0	74.0	75.0	76.0	77.0	78.0	79.0	80.0
0.0	8.36	7.73	7.10	6.52	5.94	5.47	4.89	4.31	3.99
45.0	8.94	8.36	7.67	7.04	6.52	5.99	5.41	4.84	4.36
90.0	7.83	7.36	6.73	6.15	5.62	5.10	4.78	4.05	3.63
135.0	8.67	8.04	7.46	6.89	6.41	5.83	5.26	4.78	4.31
180.0	9.30	8.67	8.04	7.46	6.94	6.41	5.83	5.26	4.78
225.0	8.52	7.88	7.36	6.78	6.20	5.68	5.41	4.68	4.15
270.0	9.62	8.94	8.36	7.78	7.25	6.62	6.04	5.57	5.05
315.0	8.94	8.36	7.83	7.25	6.73	6.15	5.62	5.05	4.57
360.0	8.36	7.73	7.10	6.52	5.94	5.47	4.89	4.31	3.99
C/γ(°)	81.0	82.0	83.0	84.0	85.0	86.0	87.0	88.0	89.0
0.0	3.47	3.05	2.73	2.37	2.10	1.79	1.47	1.21	0.84
45.0	3.84	3.36	3.00	2.47	2.16	1.89	1.52	1.26	0.89
90.0	3.15	2.84	2.42	2.16	1.89	1.68	1.37	1.00	0.79
135.0	3.84	3.36	3.00	2.63	2.26	2.00	1.68	1.42	1.16
180.0	4.31	3.84	3.36	3.05	2.47	2.26	1.94	1.68	1.31
225.0	3.73	3.31	3.00	2.63	2.26	2.00	1.68	1.42	1.16
270.0	4.52	4.10	3.57	3.15	2.73	2.37	2.10	1.84	1.47
315.0	4.10	3.57	3.21	2.79	2.47	2.16	1.84	1.52	1.26
360.0	3.47	3.05	2.73	2.37	2.10	1.79	1.47	1.21	0.84

Intensity data(cd)

C/ γ (°)	90.0
0.0	0.89
45.0	0.84
90.0	0.79
135.0	0.79
180.0	1.05
225.0	1.00
270.0	1.21
315.0	1.10
360.0	0.89